

Electric pump

EL20SS-AP

PUMP SPECIFICATIONS

Max Capacity [m ³ /h]	160
Max Head [m]	27
Impeller diameter [mm]/type	325 /3 blades opened
Flanged bore size [DN/PN]	DN100/PN10
Solid handling [mm]	25
Weight [kg]	310

ELECTRIC MOTOR

Power [kW - HP]	22-30
Voltage [V]/Current [A]	230-400 / 70-42
Phases/Poles/Frequency [Hz]	3 / 4 / 50
Speed [RPM]	1450
Insulation class	H
Power cable 20 m (IEC 60245-4)	4G10

MATERIALS

Casing	Duplex Stainless Steel CD3MN
Motor housing	Duplex Stainless Steel CD3MN
Wear parts	Duplex Stainless Steel CD3MN
Main shaft	S.Duplex Stainless Steel X2NiCrMoN 25-7-4 (1.4410)

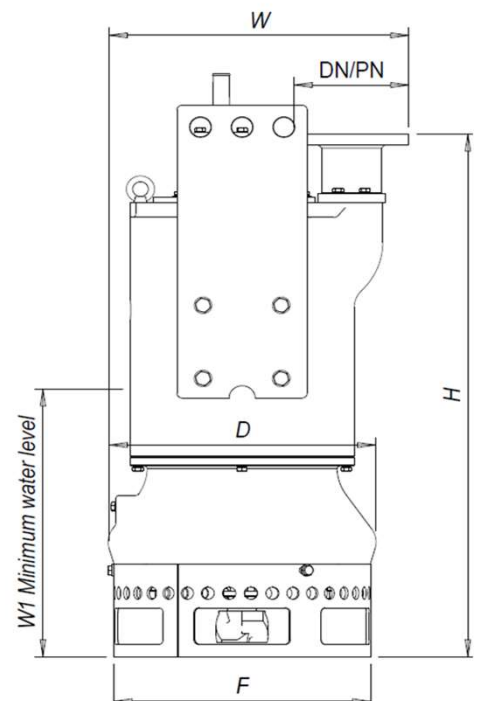
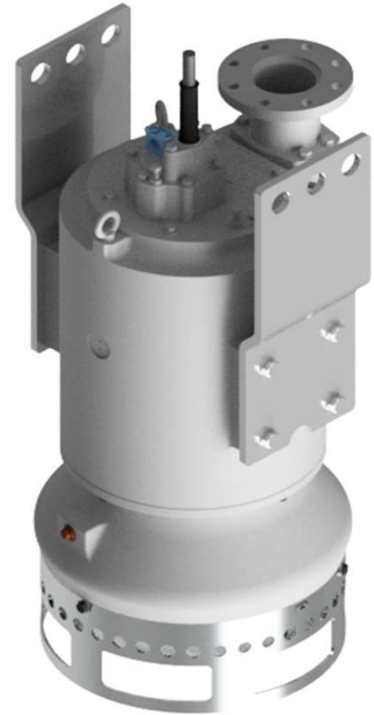
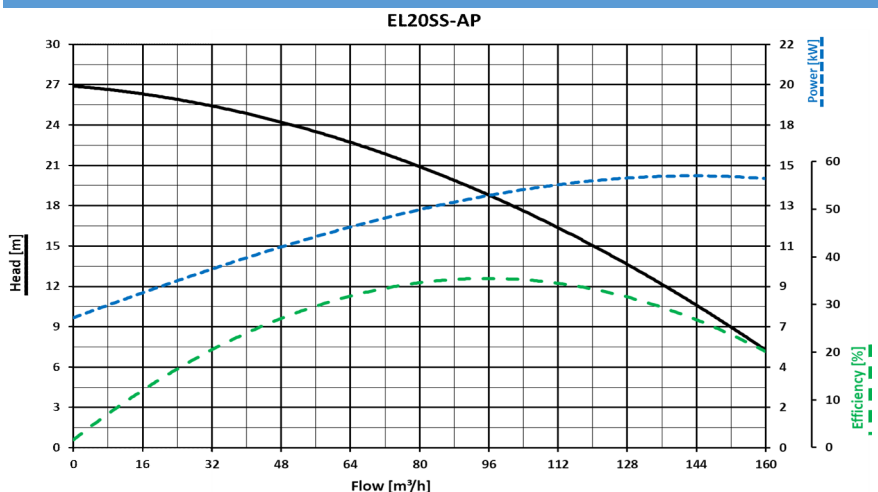
SEALS / LUBRICANT

Motor side seals	1 mechanical seal (silicon carbide in oil bath)
Impeller side seals	1 mechanical seal (silicon carbide in oil bath) + 3 lip seals (1 FKM + 2 PTFE)
Oil type	ISO 32

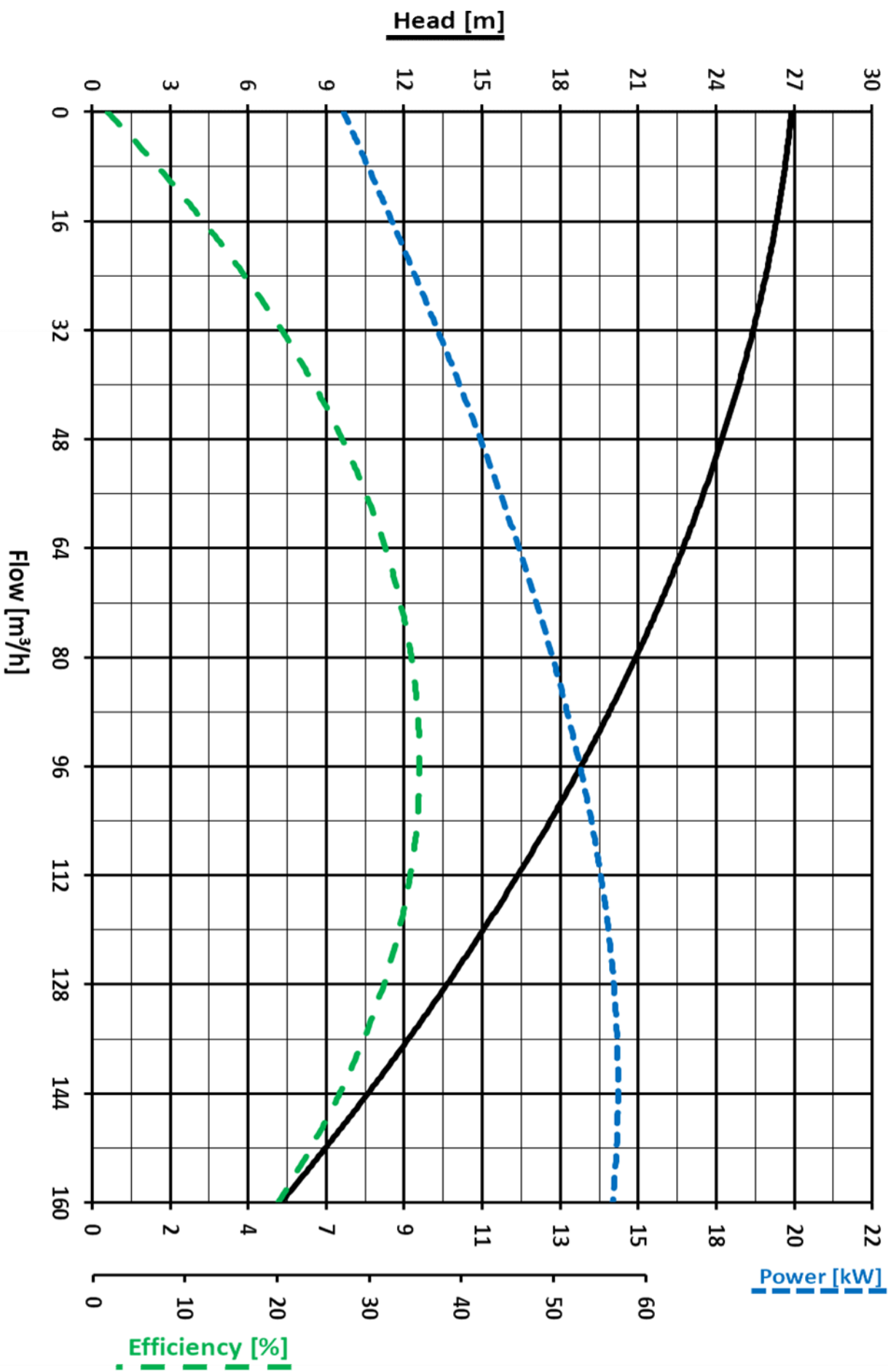
DIMENSIONS [mm]

H	W	D	F	H1			
1070	575	510	490	550			

PERFORMANCE CURVES



EL20SS-AP



We reserve the right to make changes without notice