

Electric pump

EL400

PUMP SPECIFICATIONS

Max Capacity [m ³ /h]	1400
Max Head [m]	62
Impeller diameter [mm]/type	710 / 2 blades opened
Flanged bore size [DN/PN]	DN250/PN10
Solid handling [mm]	120
Weight [kg]	6300

ELECTRIC MOTOR

Power [kW - HP]	325-440
Voltage [V]/Current [A]	400 / 586
Phases/Poles/Frequency [Hz]	3 / 6 / 50
Speed [RPM]	950
Insulation class	H
Power cable 20 m (IEC 60245-4)	2 x H07RN-F 4G95

MATERIALS

Casing	Spheroidal cast iron EN-GJS500-7 (EN1563)
Motor housing	Cast iron EN-GJL-250 (EN 1561)
Wear parts	High chrome EN-GJN-HV600 (XCr18) (EN12513)
Main shaft	High tensile steel 39NiCrMo3 (AISI 9840)

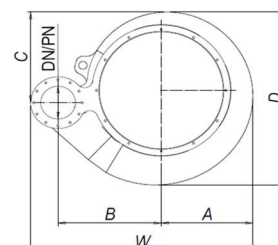
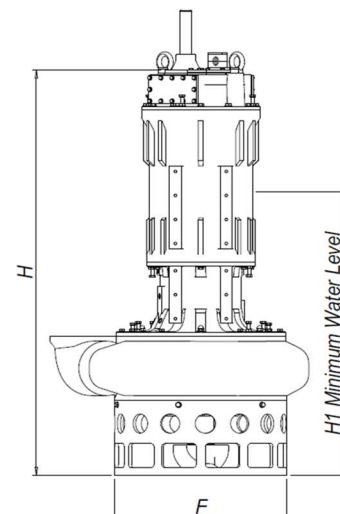
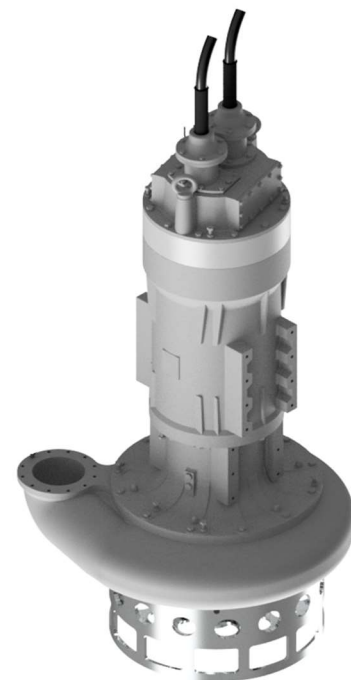
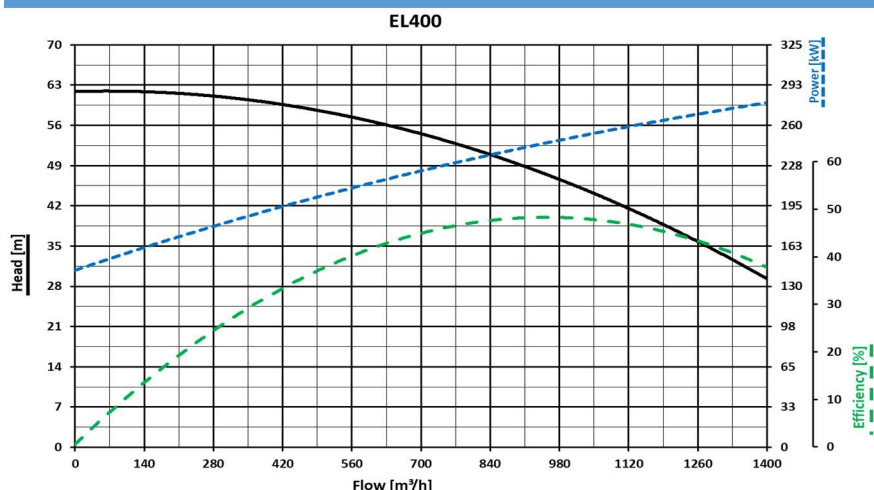
SEALS / LUBRICANT

Motor side seals	3 lip seals (2 BUNA + 1 PTFE)
Impeller side seals	5 lip seals (3 BUNA + 2PTFE) + 1 V-ring (TPU)
Oil type	ISO 32

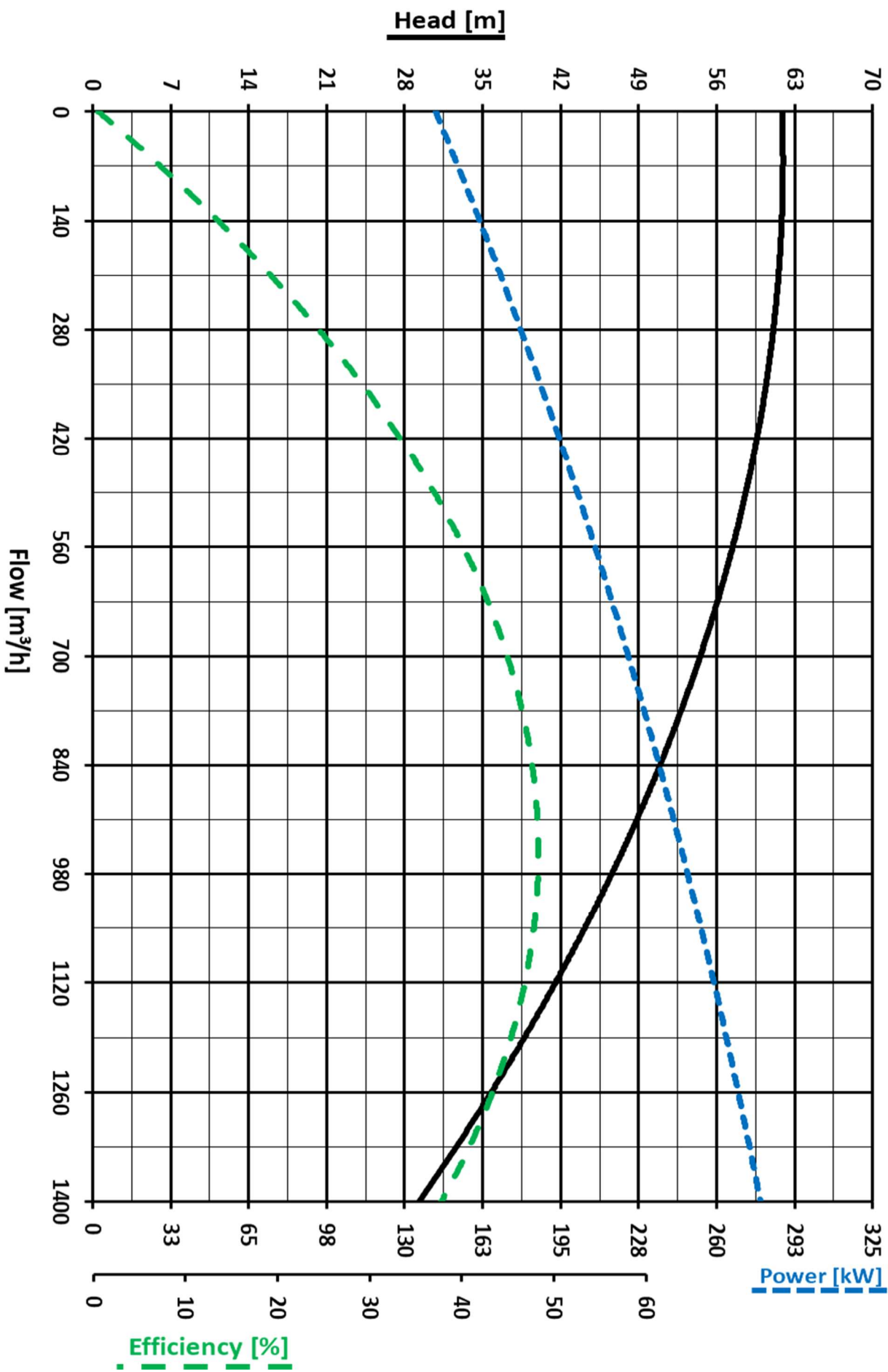
DIMENSIONS [mm]

H	W	D	F	H1	A	B	C
3500	3500	1600	1015	2600	625	750	453

PERFORMANCE CURVES



EL400



We reserve the right to make changes without notice